

RAVENATTE

STONE COLLECTION

2010

Remember -

STONE must be sealed and maintained
STONE should be sealed PRIOR to grouting
STONE cannot be sorted or returned partially
STONE has a natural variation that is beautiful
STONE is not always consistently available

USE CODES

durability ❶ Residential
 ❷ Residential/Light Commercial
 ❸ Commercial

variation ● Minimal Shade/Color Variation
 ■ Moderate Shade/Color Variation
 ▲ Considerable Shade/Color Variation
 ☒ Aged, Tumbled, Rustic or Distressed tiles
 may have irregular edges and/or corners

we recommend to ALWAYS set from multiple (4-5)
cartons to adequately blend the installation

Sealing is an important step in the installation and maintenance of any NATURAL STONE!

We recommend the use of a premium quality PENETRATING SEALER.
(STONETECH HEAVY DUTY IMPREGNATOR PRO or equivalent)

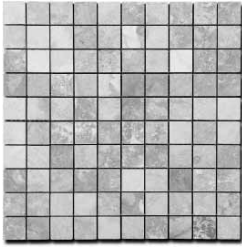
We also recommend sealing the NATURAL STONE **PRIOR** to grouting to prevent
staining and maintain color consistency of the NATURAL STONE.

Packing information is intended to be accurate and helpful, but factories occasionally change packing without notice. All information contained is believed to be reliable, but not to be taken as promise or assurance. All reports of inaccuracies, errors or misprints are appreciated.

:

RAVENNATE

1 x 1 HONED (mounted)

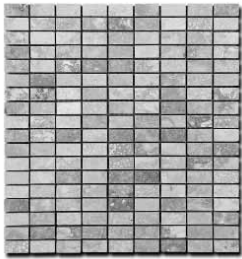


▶ 11 3/8" x 11 3/8" ◀

finish HONED/FILLED
 thickness 3/8
 unit Sheet
 unit size .90 sf sheet
 unit/sf 1.11

lbs/unit (sheets) sf/packing
 4.5 11 11/carton

prod no. prod name
 XRV 6207 Ocean Bleu
 XRV 6208 Mahogany



▶ 12 1/8" x 11 3/8" ◀

finish HONED/FILLED
 thickness 3/8
 unit Sheet
 unit size .98 sf sheet
 unit/sf 1.01

lbs/unit (sheets) sf/packing
 4.5 11 11/carton

prod no. prod name
 XRV 6107 Ocean Bleu
 XRV 6108 Mahogany



1/2 x 1 HONED (mounted)



Ocean Bleu 13/16 x 13/16
 Mahogany 13/16 x 13/16

Ocean Bleu 5/8 x 13/16
 Mahogany 5/8 x 13/16

RAVENNATE



finish HONED
 thickness 3/8 (◇ 1/2)
 unit Sf
 pc size 12 x 12
 pc/sf 1

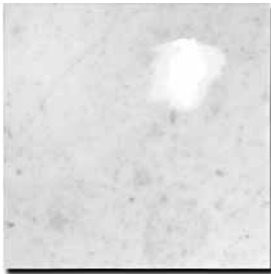
 lbs/sf (pcs) sf/packing
 5.5 10 10/carton
 ◇ 6.5 loose in crate

prod no.	prod name	
XRV 1201	Bianco Carrara*	③■
XRV 1202	Botticino	③■
XRV 1203	Crema Marfil	③■
XRV 1204	St. Croix	③■
XRV 1205	Sierra Cream	③■
XRV 1206	Avorio de Segeste	③■
XRV 1207	Ocean Bleu ◇	③▲
XRV 1208	Mahogany ◇	③▲

HONED 12 x 24

XRV 2401	Bianco Carrara*	③■
----------	-----------------	----

POLISHED 12 x 12



finish HONED
 thickness 3/8
 unit Sf
 pc size 12 x 12
 pc/sf 1

 lbs/sf (pcs) sf/packing
 5.5 10 10/carton

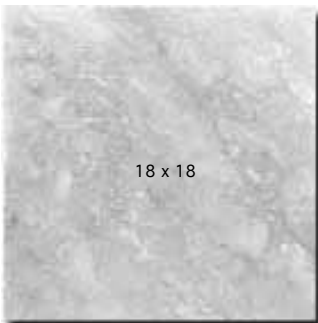
prod no.	prod name	
XRV 1281	Bianco Carrara*	③■



Bianco Carrara (polished)
marble

**our BIANCO CARRARA is a superior VENATINO selection, particularly beautiful!*

HONED 18 x 18



finish HONED
 thickness 1/2
 unit Sf
 pc size 18 x 18
 pc/sf .45

 lbs/sf (pcs) sf/packing
 6.5 loose in crate

prod no.	prod name	
XRV 1807	Ocean Bleu	③■

italics emeryville
phone 510 547 1872

italics san rafael
phone 415 451 6150

RAVENNATE

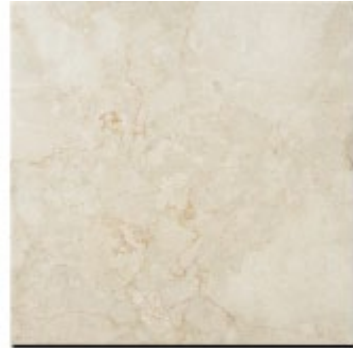
HONED 12 x 12



Crema Marfil
marble



St. Croix
marble



Sierra Cream
marble



Avorio de Segeste
marble



Ocean Bleu
travertine



Mahogany
travertine



Bianco Carrara
marble



Botticino
marble

RAVENNATE

Distressed Edge



8 x 8



8 x 16



16 x 16

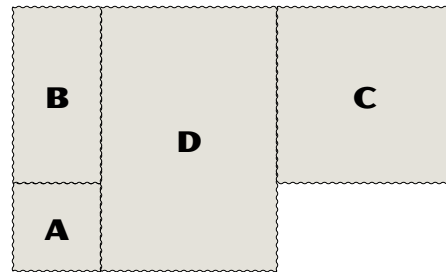


16 x 24

finish **DISTRESSED EDGE**
 thickness 5/8
 unit Sf

prod no.	prod name	
XRV 9100A	Ivory 8 x 8	composition
XRV 9100B	Ivory 8 x 16	composition
XRV 9100C	Ivory 16 x 16	composition
XRV 9100D	Ivory 16 x 24	composition
XRV 9200A	Walnut 8 x 8	composition
XRV 9200B	Walnut 8 x 16	composition
XRV 9200C	Walnut 16 x 16	composition
XRV 9200D	Walnut 16 x 24	composition

unit size	lbs/sf	(pcs)	sf/packing	pcs/sf	sf/pc
8 x 8	6	625±	269±/crate	2.32	.43
8 x 16	6	320±	275±/crate	1.16	.86
16 x 16	6	155±	267±/crate	.58	1.72
16 x 24	6	75±	194±/crate	.39	2.58



the 4 PIECE setting pattern is based on a repeating module consisting of the following

	size	pc/pattern	
A	8 x 8	1	
B	8 x 16	1	
C	16 x 16	1	
D	16 x 24	1	
		sf/module	= 5.59 sf

RAVENNATE

IVORY BLEND

stone TRAVERTINE
use Commercial ③
variation High ▲ ▣



WALNUT BLEND

stone TRAVERTINE
use Commercial ③
variation High ▲ ▣



RAVENNATE